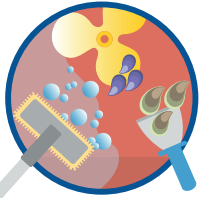
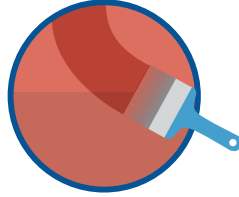


PREPARATIONS TO YOUR VESSEL BEFORE TRANSIT



- Clean the hull at the last port of departure.
- Clean all niche areas (rudder, propeller and hull fittings) and equipment to ensure that they are free from biofouling organisms. **Any biofouling organisms removed should be safely disposed of in an onshore rubbish bin.**



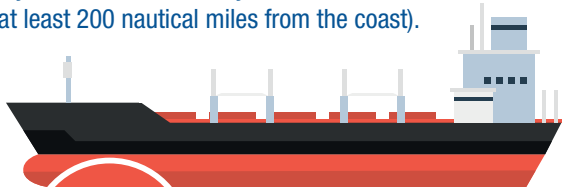
- Apply a good, thorough and functioning antifouling coating prior to travelling to the Pitcairn Islands.



- Inspect, clean and air-dry (for at least 48 hours) any marine equipment prior to using it in the Pitcairn Islands (e.g. ropes, anchors, chains, fishing lines etc).

AT SEA BEFORE ENTERING OUR WATERS

It is illegal to discharge a polluting substance – including ballast water - from a vessel in any Coastal Conservation Area (i.e.) within 12 nautical miles from land). If possible, please discharge any ballast water before you enter the Pitcairn Islands' waters (at least 200 nautical miles from the coast).



Empty any bilge or ballast water in the open sea or at least **200 nautical miles from any land.**

Flush internal seawater systems with fresh water or use an approved treatment.

TRAVELLING BETWEEN ISLANDS

- Once you are in the Pitcairn Islands, before moving to a different island, inspect, clean and dry equipment and gear. If possible, the equipment should be dried for at least 48 hours before using it in or around a different island.



MARINE BIOSECURITY

The Pitcairn Islands

“We love our islands just the way they are - please help us to keep them this way!”



How do non-native species reach our islands?

People, vessels, containers, cargo and animals can all carry threatening non-native species to our islands.

The waters around the Pitcairn Islands support a wealth of marine wildlife and are a Marine Protected Area. Invasive non-native alien plants and animals can damage this pristine marine environment. They can spread rapidly, killing native plants and animals. Once they establish, they are very difficult to eradicate. It is therefore critical that we take steps to prevent their introduction.

GENERAL GUIDANCE: Please inspect and clean your possessions so they are free from soil, seeds and stowaways (rodents, insects, etc). Please also note that honey and all bee products are strictly prohibited. This will help us protect our environment and people's health.



The three priority marine invasive non-native species in the Pitcairn Islands are:

Black Striped Mussel



© Copyright CSIRO Australia

- Shell colour varies from black brown-light grey/white.
- Some show light and dark zig zag pattern or longitudinal stripes.
- Two shells unequal in size; one side slightly overlaps the other.
- Grows up to 2.8cm in length.
- Grows on hard surfaces usually in clusters: vessel hulls, pylons, buoys and pontoons; also grows on ropes.

Asian Green Mussel



- **Juveniles:** dark brown-green shells at the front and vibrant blue-green at the wider part of the shell. **Adults:** mostly brown with brighter colouration at the edges. Inside of the shell has a blue-green iridescent hue.
- A smooth elongated shell with a distinctive downward pointing beak.
- Can grow up to 16cm in length.
- Attaches to surfaces including rocks, buoys, fishing equipment and hulls.

Mediterranean Mussel



© Adam Britton

- Colour varies from brown, blue or purple to black.
- Large triangular shaped shell with concentric lines.
- Two shell halves are equal in size.
- Can grow up to 20cm in length.
- Usually found attached to hard substrates.

If you spot any of these three species during your visit, please follow these steps:

1. Take a photo.
2. Record location.
3. Report it to Michele Christian at the Environmental, Conservation and Natural Resources Division: dmnature@pitcairn.gov.pn